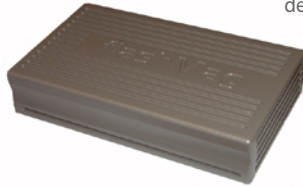


LOCATION

FlashMag From SET
All Solid State Flash based,
Uncompressed recording
DPX data direct to post
Return FlashMag to SET for Re-use
Fast turnaround



Self contained, field portable, lightweight and AC or DC powered for maximum flexibility. Intuitive GUI menu driven Touch Screen control for all set ups and operations with high degree of automation. Easy to Use!



OFFLINE

FLASHDOCK automated offline with full metadata transfer via XML (FCP) or ALE (AVID) provides Quality Control point and edit capability of Metadata. Batch capture HD-SDI 422 with LUTs added under offline control or 444 with or without LUT to VTR or color correction.



AC or DC Power
110 ~250V AC
50/60Hz
24VDC

CONNECTION OPTIONS

Gigabit Ethernet

eSATA Connection

SAS Connection

4Gbit Fibre Channel-
Connection

Real-time to video
Dual-Link HD-SDI 444
HD-SDI 422
RP188 Embedded data
RS422 Control
Embedded Audio
User Added LUT
Real-time ARRIRAW De-Bayer



Network storage and sharing



External Drives



Fibre Channel MAC
HFS+ RAID



Layoff to Video tape
444 or 422



S.two Automated offline

FCP or AVID Real-time ingest - XML or ALE from FlashDock.
All scenes / take metadata appear in Offline for automated Batch capture

FLASHDOCK

Full 3D capability
2 x 422
2 x 444
2 x RAW

ARCHIVE

Use the same
FlashDock for both
Offline and Archive

FLASHDOCK

Archive to 1 or 2 X LTO4 or LTO5 uncompressed data tape with full database.
Save database for POST.
Database also on each LTO tape.

ARCHIVE

OFFLINE

LTO to Archive



LTO to Post



Create EDL
FCP or AVID

POST



Load EDL to FlashDock with LTO tapes
Use FlashDock NEGPULL and database with EDL from offline to extract selects with head and tail handles to external e-SATA drive or FC or e-SATA RAID for pre-conform in D.I..

DPX sequence transferred to attached RAID or Drives.
If using RAW, Use ARRI Raw Converter to de-bayer frames

D.I. Finish



S.two

Digital Filmmaking



NEGPULL

S.two provides user operated fast 'NEGPULL', a file extraction utility for pre-conforming data from offline EDL.

Simple to use this allows fast turn around for test conforms or pre-screensers or even to pull VFX frame sequences.

FlashDock provides any size production with control