

S.two - End to End Digital Cinematography Workflow

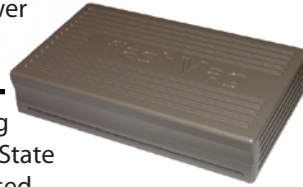
SET



OB-1 On-board recording, self-contained, un-tethered, uncompressed recording to DPX with analog audio guide track, full TC and video monitoring. Low weight, Low power

422
444
Vari-Frame

FlashMag
All Solid State
Flash based
Uncompressed recording
DPX data direct to post



LOCATION

OFFLINE

HD Digitize from FlashDock files, synced with uncompressed S.two recordings



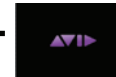
FLASHDOCK automated offline with full metadata transfer via XML (FCP) or ALE (AVID) provides Quality Control point and edit capability of Metadata. Batch capture HD-SDI 422 with LUTs added under offline control or 444 with or without LUT to VTR or color correction.



POST

Load EDL to FlashDock with LTO tapes
Use FlashDock NEGPULL and database with EDL from offline to extract selects with head and tail handles to external e-SATA drive or FC or e-SATA RAID for pre-conform in D.I..

Create EDL
FCP or AVID



ARCHIVE
Use the same FlashDock for both offline and Archive



FLASHDOCK Archive to 1 or 2 X LTO4 or LTO5 uncompressed data tape with full database. Save database for POST. Database also on each LTO tape.



DPX sequence transferred to attached RAID or Drives. If using RAW, Use ARRI Raw Converter to de-bayer frames

D.I. Finish

S.two
Digital Filmmaking



LTO to Post



LTO to Archive